

Product datasheet for **TA359111**

Polyserase3 (PRSS53) Rabbit Polyclonal Antibody

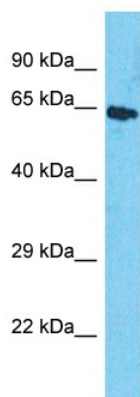
Product data:

Product Type:	Primary Antibodies
Applications:	WB
Reactivity:	Human
Host:	Rabbit
Clonality:	Polyclonal
Immunogen:	The immunogen is a synthetic peptide directed towards the C-terminal region of Human PRSS53
Specificity:	Expected reactivity: Dog, Horse, Human, Mouse, Pig, Rabbit, Yeast Homology: Dog: 93%; Horse: 86%; Human: 100%; Mouse: 93%; Pig: 100%; Rabbit: 75%; Yeast: 100%
Formulation:	Liquid. Purified antibody supplied in 1x PBS buffer with 0.09% (w/v) sodium azide and 2% sucrose.
Concentration:	lot specific
Purification:	Affinity Purified
Conjugation:	Unconjugated
Storage:	For short term use, store at 2-8°C up to 1 week. For long term storage, store at -20°C in small aliquots to prevent freeze-thaw cycles.
Stability:	Shelf life: one year from despatch.
Predicted Protein Size:	60kDa
Gene Name:	protease, serine 53
Database Link:	NP_001034592 Entrez Gene 339105 Human Q2L4Q9
Background:	In vitro, PRSS53 can degrade the fibrinogen alpha chain of as well as pro-urokinase-type plasminogen activator
Synonyms:	mFLJ00289; Pol3s; RGD1311277; RGD1566127



[View online »](#)

Product images:



Host: Rabbit
Target Name: PRSS53
Sample Tissue: HepG2 Cell Lysate
Antibody Dilution: 1.0 μ g/ml

Host: Rabbit
Target Name: PRSS53
Sample Tissue: Human HepG2 Whole Cell
Antibody Dilution: 1 μ g/ml