

## Product datasheet for **TA359093**

### OPLAH Rabbit Polyclonal Antibody

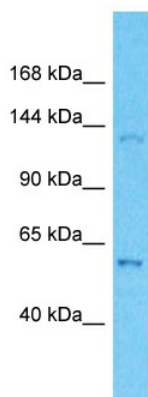
#### Product data:

Product Type:	Primary Antibodies
Applications:	WB
Reactivity:	Human
Host:	Rabbit
Clonality:	Polyclonal
Immunogen:	The immunogen is a synthetic peptide directed towards the C-terminal region of Human OPLAH
Specificity:	<b>Expected reactivity:</b> Human
Formulation:	Liquid. Purified antibody supplied in 1x PBS buffer with 0.09% (w/v) sodium azide and 2% sucrose. <i>Note that this product is shipped as lyophilized powder to China customers.</i>
Concentration:	lot specific
Purification:	Affinity Purified
Conjugation:	Unconjugated
Storage:	For short term use, store at 2-8°C up to 1 week. For long term storage, store at -20°C in small aliquots to prevent freeze-thaw cycles.
Stability:	Shelf life: one year from despatch.
Predicted Protein Size:	141kDa
Gene Name:	5-oxoprolinase (ATP-hydrolysing)
Database Link:	<a href="#">NP_060040</a> <a href="#">Entrez Gene 26873 Human O14841</a>
Background:	OPLAH catalyzes the cleavage of 5-oxo-L-proline to form L- glutamate coupled to the hydrolysis of ATP to ADP and inorganic phosphate.
Synonyms:	5-OPase; 5-oxo-L-prolinase; DKFZp434H244; OPLA; Pyroglutamase



[View online »](#)

## Product images:



Host: Rabbit  
Target Name: OPLAH  
Sample Tissue: MCF7 Cell Lysate  
Antibody Dilution: 1.0 $\mu$ g/ml

Host: Rabbit  
Target Name: OPLAH  
Sample Type: MCF7 Whole Cell lysates  
Antibody Dilution: 1.0ug/ml