

## Product datasheet for **TA359091**

### **NPIPL2 (NPIP15) Rabbit Polyclonal Antibody**

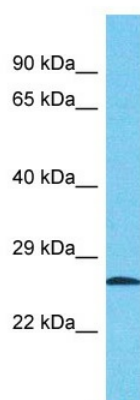
#### **Product data:**

Product Type:	Primary Antibodies
Applications:	WB
Reactivity:	Human
Host:	Rabbit
Clonality:	Polyclonal
Immunogen:	The immunogen is a synthetic peptide directed towards the middle region of human NPIP15
Specificity:	<b>Expected reactivity:</b> Human <b>Homology:</b> Human: 100%
Formulation:	Liquid. Purified antibody supplied in 1x PBS buffer with 0.09% (w/v) sodium azide and 2% sucrose. <i>Note that this product is shipped as lyophilized powder to China customers.</i>
Concentration:	lot specific
Purification:	Affinity Purified
Conjugation:	Unconjugated
Storage:	For short term use, store at 2-8°C up to 1 week. For long term storage, store at -20°C in small aliquots to prevent freeze-thaw cycles.
Stability:	Shelf life: one year from despatch.
Predicted Protein Size:	24kDa
Gene Name:	nuclear pore complex interacting protein family member B15
Database Link:	<a href="#">NP_001293023.1</a> <a href="#">Entrez Gene 440348 Human</a> <a href="#">A6NHN6</a>



[View online »](#)

Product images:



Host: Rabbit  
Target Name: NPIPL1  
Sample Type: Jurkat Whole Cell lysates  
Antibody Dilution: 1.0ug/ml