

## Product datasheet for **TA359079**

### KRT34 Rabbit Polyclonal Antibody

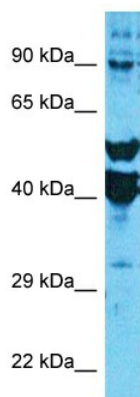
#### Product data:

Product Type:	Primary Antibodies
Applications:	WB
Reactivity:	Human
Host:	Rabbit
Clonality:	Polyclonal
Immunogen:	The immunogen is a synthetic peptide directed towards the middle region of Human KRT34
Specificity:	<b>Expected reactivity:</b> Human
Formulation:	Liquid. Purified antibody supplied in 1x PBS buffer with 0.09% (w/v) sodium azide and 2% sucrose. <i>Note that this product is shipped as lyophilized powder to China customers.</i>
Concentration:	lot specific
Purification:	Affinity Purified
Conjugation:	Unconjugated
Storage:	For short term use, store at 2-8°C up to 1 week. For long term storage, store at -20°C in small aliquots to prevent freeze-thaw cycles.
Stability:	Shelf life: one year from despatch.
Predicted Protein Size:	47kDa
Gene Name:	keratin 34
Database Link:	<a href="#">XP_003403930</a> <a href="#">Entrez Gene 3885 Human</a> <a href="#">O76011</a>
Background:	The protein encoded by this gene is a member of the keratin gene family. As a type I hair keratin, it is an acidic protein which heterodimerizes with type II keratins to form hair and nails. The type I hair keratins are clustered in a region of chromosome 17q12-q21 and have the same direction of transcription.
Synonyms:	Ha-4; HA4; hHa4; HKA4; K34; Keratin-34; KRTHA4



[View online »](#)

## Product images:



Host: Rabbit  
Target Name: KRT34  
Sample Tissue: NCI-H226 Cell Lysate  
Antibody Dilution: 1.0 $\mu$ g/ml

Host: Rabbit  
Target Name: KRT34  
Sample Type: NCI-H226 Whole Cell lysates  
Antibody Dilution: 1.0 $\mu$ g/ml