

## Product datasheet for **TA359078**

### KRT72 Rabbit Polyclonal Antibody

#### Product data:

Product Type:	Primary Antibodies
Applications:	WB
Reactivity:	Human
Host:	Rabbit
Clonality:	Polyclonal
Immunogen:	The immunogen is a synthetic peptide directed towards the C-terminal region of Human KRT72
Specificity:	<b>Expected reactivity:</b> Cow, Horse, Human, Rat <b>Homology:</b> Cow: 100%; Horse: 93%; Human: 100%; Rat: 79%
Formulation:	Liquid. Purified antibody supplied in 1x PBS buffer with 0.09% (w/v) sodium azide and 2% sucrose. <i>Note that this product is shipped as lyophilized powder to China customers.</i>
Concentration:	lot specific
Purification:	Affinity Purified
Conjugation:	Unconjugated
Storage:	For short term use, store at 2-8°C up to 1 week. For long term storage, store at -20°C in small aliquots to prevent freeze-thaw cycles.
Stability:	Shelf life: one year from despatch.
Predicted Protein Size:	56kDa
Gene Name:	keratin 72
Database Link:	<a href="#">NP_542785</a> <a href="#">Entrez Gene 140807 Human</a> <a href="#">Q14CN4</a>



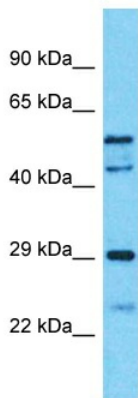
[View online »](#)

**Background:**

Keratins are intermediate filament proteins responsible for the structural integrity of epithelial cells. The type II keratins consist of basic or neutral proteins which are arranged in pairs of heterotypic keratin chains coexpressed during differentiation of simple and stratified epithelial tissues. This gene encodes a type II keratin that is specifically expressed in the inner root sheath of hair follicles. The type II keratins are clustered in a region of chromosome 12q12-q13. Multiple transcript variants encoding different isoforms have been found for this gene.

**Synonyms:**

CK-72; Cytokeratin-72; K6irs; K6IRS2; K72; KB35; Keratin-72; KRT6; KRT6IRS2; MGC142246

**Product images:**

Host: Rabbit  
Target Name: KRT72  
Sample Tissue: MCF7 Cell Lysate  
Antibody Dilution: 1.0 $\mu$ g/ml

Host: Rabbit  
Target Name: KRT72  
Sample Tissue: Human MCF7 Whole Cell  
Antibody Dilution: 1 $\mu$ g/ml