

Product datasheet for **TA359068**

HIGD2A Rabbit Polyclonal Antibody

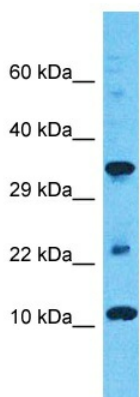
Product data:

Product Type:	Primary Antibodies
Applications:	WB
Reactivity:	Human
Host:	Rabbit
Clonality:	Polyclonal
Immunogen:	The immunogen is a synthetic peptide directed towards the N-terminal region of Human HIGD2A
Specificity:	Expected reactivity: Human
Formulation:	Liquid. Purified antibody supplied in 1x PBS buffer with 0.09% (w/v) sodium azide and 2% sucrose. <i>Note that this product is shipped as lyophilized powder to China customers.</i>
Concentration:	lot specific
Purification:	Affinity Purified
Conjugation:	Unconjugated
Storage:	For short term use, store at 2-8°C up to 1 week. For long term storage, store at -20°C in small aliquots to prevent freeze-thaw cycles.
Stability:	Shelf life: one year from despatch.
Predicted Protein Size:	11kDa
Gene Name:	HIG1 hypoxia inducible domain family member 2A
Database Link:	NP_620175 Entrez Gene 192286 Human Q9BW72
Background:	HIGD2A is a proposed subunit of cytochrome c oxidase (COX, complex IV), which is the terminal component of the mitochondrial respiratory chain that catalyzes the reduction of oxygen to water. It may be involved in cytochrome c oxidase activity. It may play a role in the assembly of respiratory supercomplexes.
Synonyms:	MGC2198



[View online »](#)

Product images:



Host: Rabbit
Target Name: HIGD2A
Sample Tissue: COLO205 Cell Lysate
Antibody Dilution: 1.0 μ g/ml

Host: Rabbit
Target Name: HIGD2A
Sample Type: COLO205 Whole Cell lysates
Antibody Dilution: 1.0 μ g/ml