

Product datasheet for **TA359059**

NUTM2F Rabbit Polyclonal Antibody

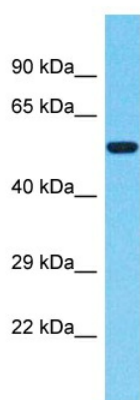
Product data:

Product Type:	Primary Antibodies
Applications:	WB
Reactivity:	Human
Host:	Rabbit
Clonality:	Polyclonal
Immunogen:	The immunogen is a synthetic peptide directed towards the C-terminal region of human NUTM2F
Specificity:	Expected reactivity: Human Homology: Human: 100%
Formulation:	Liquid. Purified antibody supplied in 1x PBS buffer with 0.09% (w/v) sodium azide and 2% sucrose.
Concentration:	lot specific
Purification:	Affinity Purified
Conjugation:	Unconjugated
Storage:	For short term use, store at 2-8°C up to 1 week. For long term storage, store at -20°C in small aliquots to prevent freeze-thaw cycles.
Stability:	Shelf life: one year from despatch.
Predicted Protein Size:	54kDa
Gene Name:	NUT family member 2F
Database Link:	NP_060031.1 Entrez Gene 54754 Human A1L443
Synonyms:	FAM22F; NUTMF



[View online »](#)

Product images:



Host: Rabbit
Target Name: NUTM2F
Sample Tissue: U937 Cell Lysate
Antibody Dilution: 1.0µg/ml

Host: Rabbit
Target Name: NUTM2F
Sample Type: U937 Whole cell lysates
Antibody Dilution: 1.0ug/ml