

Product datasheet for **TA359056**

DC2L1 (DYNC2LI1) Rabbit Polyclonal Antibody

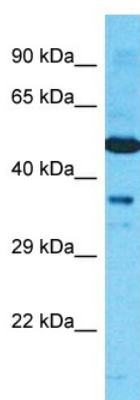
Product data:

Product Type:	Primary Antibodies
Applications:	WB
Reactivity:	Human
Host:	Rabbit
Clonality:	Polyclonal
Immunogen:	The immunogen is a synthetic peptide directed towards the C-terminal region of Human DYNC2LI1
Specificity:	Expected reactivity: Cow, Dog, Guinea Pig, Horse, Human, Mouse, Rabbit, Rat Homology: Cow: 86%; Dog: 93%; Guinea Pig: 93%; Horse: 93%; Human: 100%; Mouse: 92%; Rabbit: 93%; Rat: 93%
Formulation:	Liquid. Purified antibody supplied in 1x PBS buffer with 0.09% (w/v) sodium azide and 2% sucrose. <i>Note that this product is shipped as lyophilized powder to China customers.</i>
Concentration:	lot specific
Purification:	Affinity Purified
Conjugation:	Unconjugated
Storage:	For short term use, store at 2-8°C up to 1 week. For long term storage, store at -20°C in small aliquots to prevent freeze-thaw cycles.
Stability:	Shelf life: one year from despatch.
Predicted Protein Size:	36kDa
Gene Name:	dynein cytoplasmic 2 light intermediate chain 1
Database Link:	Entrez Gene 51626 Human Q8TCX1-3
Background:	DYNC2LI1 may function as a motor for intraflagellar retrograde transport. It functions in cilia biogenesis.
Synonyms:	CGI-60; D2LIC; DKFZP564A033; LIC3



[View online »](#)

Product images:



Host: Rabbit
Target Name: DYNC2L1
Sample Tissue: HeLa Cell Lysate
Antibody Dilution: 1.0 μ g/ml

Host: Rabbit
Target Name: DYNC2L1
Sample Tissue: Human HeLa Whole Cell
Antibody Dilution: 1 μ g/ml