

Product datasheet for **TA359055**

CTAGE5 (MIA2) Rabbit Polyclonal Antibody

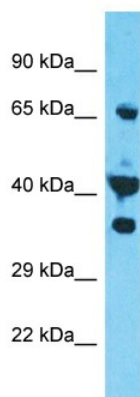
Product data:

Product Type:	Primary Antibodies
Applications:	WB
Reactivity:	Human
Host:	Rabbit
Clonality:	Polyclonal
Immunogen:	The immunogen is a synthetic peptide directed towards the middle region of Human CTAGE5
Specificity:	Expected reactivity: Cow, Dog, Horse, Human, Pig, Rabbit Homology: Cow: 86%; Dog: 92%; Horse: 86%; Human: 100%; Pig: 79%; Rabbit: 79%
Formulation:	Liquid. Purified antibody supplied in 1x PBS buffer with 0.09% (w/v) sodium azide and 2% sucrose. <i>Note that this product is shipped as lyophilized powder to China customers.</i>
Concentration:	lot specific
Purification:	Affinity Purified
Conjugation:	Unconjugated
Storage:	For short term use, store at 2-8°C up to 1 week. For long term storage, store at -20°C in small aliquots to prevent freeze-thaw cycles.
Stability:	Shelf life: one year from despatch.
Predicted Protein Size:	73kDa
Gene Name:	CTAGE family member 5
Database Link:	Entrez Gene 4253 Human O15320-9
Background:	This gene encodes s receptor in the endoplasmic reticulum, which plays a role in the export of large pre-chylomicrons and pre-very low density lipoproteins (pre-VLDLs). Three major classes of transcripts are generated from this gene- melanoma inhibitory activity 2-specific transcripts, cTAGE family member 5-specific transcripts and transcripts that include exons from both these transcript species (TANGO1-like or TALI). Additionally, alternative splicing in these transcripts results in multiple transcript variants encoding multiple isoforms.
Synonyms:	cTAGE-5A; cTAGE-5B; cTAGE-5C; cTAGE-5D; MEA6; MEA11; MGEA; MGEA6; MGEA11



[View online »](#)

Product images:



Host: Rabbit
Target Name: CTAGE5
Sample Tissue: HepG2 Cell Lysate
Antibody Dilution: 1.0 μ g/ml

Host: Rabbit
Target Name: CTAGE5
Sample Tissue: Human HepG2 Whole Cell
Antibody Dilution: 1 μ g/ml