

Product datasheet for **TA359048**

C8orf58 Rabbit Polyclonal Antibody

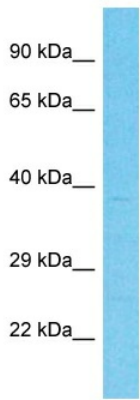
Product data:

Product Type:	Primary Antibodies
Applications:	WB
Reactivity:	Human
Host:	Rabbit
Clonality:	Polyclonal
Immunogen:	The immunogen is a synthetic peptide directed towards the C-terminal region of Human C8orf58
Specificity:	Expected reactivity: Human
Formulation:	Liquid. Purified antibody supplied in 1x PBS buffer with 0.09% (w/v) sodium azide and 2% sucrose.
Concentration:	lot specific
Purification:	Affinity Purified
Conjugation:	Unconjugated
Storage:	For short term use, store at 2-8°C up to 1 week. For long term storage, store at -20°C in small aliquots to prevent freeze-thaw cycles.
Stability:	Shelf life: one year from despatch.
Predicted Protein Size:	39kDa
Gene Name:	chromosome 8 open reading frame 58
Database Link:	NP_775957 Entrez Gene 541565 Human Q8NAV2-2
Background:	The function of this protein remains unknown.
Synonyms:	FLJ34715



[View online »](#)

Product images:



Host: Rabbit
Target Name: C8orf58
Sample Tissue: Jurkat Cell Lysate
Antibody Dilution: 1.0µg/ml

Host: Rabbit
Target Name: C8orf58
Sample Type: Jurkat Whole Cell lysates
Antibody Dilution: 1.0ug/ml