

## Product datasheet for **TA359043**

### **C17orf76 (LRRC75A) Rabbit Polyclonal Antibody**

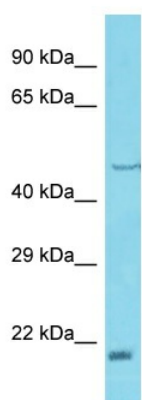
#### Product data:

Product Type:	Primary Antibodies
Applications:	WB
Reactivity:	Human
Host:	Rabbit
Clonality:	Polyclonal
Immunogen:	The immunogen is a synthetic peptide directed towards the N-terminal region of Human FAM211A
Specificity:	<b>Expected reactivity:</b> Human
Formulation:	Liquid. Purified antibody supplied in 1x PBS buffer with 0.09% (w/v) sodium azide and 2% sucrose.
Concentration:	lot specific
Purification:	Affinity Purified
Conjugation:	Unconjugated
Storage:	For short term use, store at 2-8°C up to 1 week. For long term storage, store at -20°C in small aliquots to prevent freeze-thaw cycles.
Stability:	Shelf life: one year from despatch.
Predicted Protein Size:	20kDa
Gene Name:	leucine rich repeat containing 75A
Database Link:	<a href="#">NP_997270</a> <a href="#">Entrez Gene 388341 Human</a> <a href="#">Q8NAA5-2</a>



[View online »](#)

## Product images:



Host: Rabbit  
Target Name: FAM211A  
Sample Tissue: 721\_B Cell Lysate  
Antibody Dilution: 1.0µg/ml

Host: Rabbit  
Target Name: FAM211A  
Sample Type: 721\_B Whole Cell lysates  
Antibody Dilution: 1.0ug/ml