

## Product datasheet for **TA359037**

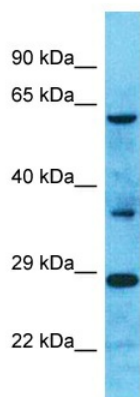
### ANKDD1A Rabbit Polyclonal Antibody

#### Product data:

Product Type:	Primary Antibodies
Applications:	WB
Reactivity:	Human
Host:	Rabbit
Clonality:	Polyclonal
Immunogen:	The immunogen is a synthetic peptide directed towards the C-terminal region of Human ANKDD1A
Specificity:	<b>Expected reactivity:</b> Human
Formulation:	Liquid. Purified antibody supplied in 1x PBS buffer with 0.09% (w/v) sodium azide and 2% sucrose.
Concentration:	lot specific
Purification:	Affinity Purified
Conjugation:	Unconjugated
Storage:	For short term use, store at 2-8°C up to 1 week. For long term storage, store at -20°C in small aliquots to prevent freeze-thaw cycles.
Stability:	Shelf life: one year from despatch.
Predicted Protein Size:	57kDa
Gene Name:	ankyrin repeat and death domain containing 1A
Database Link:	<a href="#">Entrez Gene 348094 Human Q495B1</a>
Background:	The function of this protein remains unknown.
Synonyms:	FLJ25870; MGC120305; MGC120306; MGC120307



[View online »](#)

**Product images:**


Host: Rabbit  
 Target Name: ANKDD1A  
 Sample Tissue: Fetal Liver Lysate  
 Antibody Dilution: 1.0µg/ml

Host: Rabbit  
 Target Name: ANKDD1A  
 Sample Type: Fetal Liver lysates  
 Antibody Dilution: 1.0ug/ml