

Product datasheet for **TA359030**

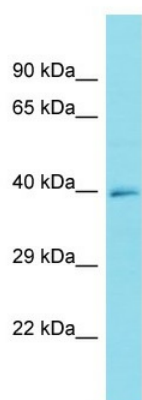
FRMD6-AS1 Rabbit Polyclonal Antibody

Product data:

Product Type:	Primary Antibodies
Applications:	WB
Reactivity:	Human
Host:	Rabbit
Clonality:	Polyclonal
Immunogen:	The immunogen is a synthetic peptide directed towards the C-terminal region of Human FRMD6-AS1
Specificity:	Expected reactivity: Human Homology: Human: 100%
Formulation:	Liquid. Purified antibody supplied in 1x PBS buffer with 0.09% (w/v) sodium azide and 2% sucrose. <i>Note that this product is shipped as lyophilized powder to China customers.</i>
Concentration:	lot specific
Purification:	Affinity Purified
Conjugation:	Unconjugated
Storage:	For short term use, store at 2-8°C up to 1 week. For long term storage, store at -20°C in small aliquots to prevent freeze-thaw cycles.
Stability:	Shelf life: one year from despatch.
Predicted Protein Size:	42kDa
Gene Name:	FRMD6 antisense RNA 1
Database Link:	XP_950084 Entrez Gene 145438 Human P0C7T7
Background:	The function of this protein remains unknown.



[View online »](#)

Product images:

Host: Rabbit
Target Name: FRMD6-AS1
Sample Type: U937 Whole Cell lysates
Antibody Dilution: 1.0ug/ml