

Product datasheet for **TA359027**

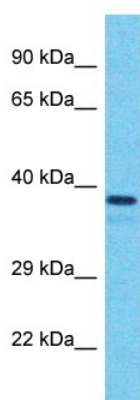
L3HYPDH Rabbit Polyclonal Antibody

Product data:

| | |
|-------------------------|--|
| Product Type: | Primary Antibodies |
| Applications: | WB |
| Reactivity: | Human |
| Host: | Rabbit |
| Clonality: | Polyclonal |
| Immunogen: | The immunogen is a synthetic peptide directed towards the C-terminal region of Human L3HYPDH |
| Specificity: | Expected reactivity: Human |
| Formulation: | Liquid. Purified antibody supplied in 1x PBS buffer with 0.09% (w/v) sodium azide and 2% sucrose. <i>Note that this product is shipped as lyophilized powder to China customers.</i> |
| Concentration: | lot specific |
| Purification: | Affinity Purified |
| Conjugation: | Unconjugated |
| Storage: | For short term use, store at 2-8°C up to 1 week. For long term storage, store at -20°C in small aliquots to prevent freeze-thaw cycles. |
| Stability: | Shelf life: one year from despatch. |
| Predicted Protein Size: | 38kDa |
| Gene Name: | trans-L-3-hydroxyproline dehydratase |
| Database Link: | NP_653182 Entrez Gene 112849 Human Q96EM0 |
| Background: | L3HYPDH catalyzes the dehydration of trans-3-hydroxy-L-proline to delta-1-pyrroline-2-carboxylate (Pyr2C). It may be required to degrade trans-3-hydroxy-L-proline from the diet and originating from the degradation of proteins such as collagen-IV that contain it. |
| Synonyms: | C14orf149 |



[View online »](#)

Product images:

Host: Rabbit
Target Name: L3HYPDH
Sample Tissue: HepG2 Cell Lysate
Antibody Dilution: 1.0 μ g/ml

Host: Rabbit
Target Name: L3HYPDH
Sample Type: HepG2 Whole Cell lysates
Antibody Dilution: 1.0ug/ml