

## Product datasheet for **TA359024**

### Macir Rabbit Polyclonal Antibody

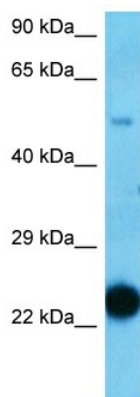
#### Product data:

Product Type:	Primary Antibodies
Applications:	WB
Reactivity:	Mouse
Host:	Rabbit
Clonality:	Polyclonal
Immunogen:	The immunogen for Anti-D1Ert622e antibody is: synthetic peptide directed towards the N-terminal of Mouse CE030
Specificity:	<b>Expected reactivity:</b> Mouse
Formulation:	Liquid. Purified antibody supplied in 1x PBS buffer with 0.09% (w/v) sodium azide and 2% sucrose. <i>Note that this product is shipped as lyophilized powder to China customers.</i>
Concentration:	lot specific
Purification:	Affinity purified
Conjugation:	Unconjugated
Storage:	For short term use, store at 2-8°C up to 1 week. For long term storage, store at -20°C in small aliquots to prevent freeze-thaw cycles.
Stability:	Shelf life: one year from despatch.
Predicted Protein Size:	22 kDa
Gene Name:	DNA segment, Chr 1, ERATO Doi 622, expressed
Database Link:	<a href="#">XP_006529815.1</a> <a href="#">Entrez Gene 52392 Mouse</a> <a href="#">Q8VEB3</a>
Synonyms:	AI987691; AW047450



[View online »](#)

## Product images:



Host: Rabbit  
Target Name: CE030  
Sample Tissue: Mouse Pancreas Lysate  
Antibody Dilution: 2.0 $\mu$ g/ml

Host: Rabbit  
Target Name: CE030  
Sample Type: Mouse Pancreas  
Antibody Dilution: 1.0 $\mu$ g/ml