

Product datasheet for **TA359022**

C6orf168 (FAXC) Rabbit Polyclonal Antibody

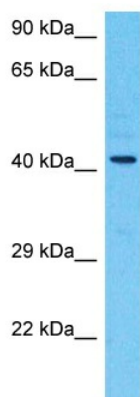
Product data:

Product Type:	Primary Antibodies
Applications:	WB
Reactivity:	Human
Host:	Rabbit
Clonality:	Polyclonal
Immunogen:	The immunogen is a synthetic peptide directed towards the C-terminal region of Human FAXC
Specificity:	Expected reactivity: Human
Formulation:	Liquid. Purified antibody supplied in 1x PBS buffer with 0.09% (w/v) sodium azide and 2% sucrose.
Concentration:	lot specific
Purification:	Affinity Purified
Conjugation:	Unconjugated
Storage:	For short term use, store at 2-8°C up to 1 week. For long term storage, store at -20°C in small aliquots to prevent freeze-thaw cycles.
Stability:	Shelf life: one year from despatch.
Predicted Protein Size:	44kDa
Gene Name:	failed axon connections homolog
Database Link:	NP_115900 Entrez Gene 84553 Human Q5TGI0
Background:	FAXC may play a role in axonal development.
Synonyms:	C6orf168; dj273F20



[View online »](#)

Product images:



Host: Rabbit
Target Name: FAXC
Sample Tissue: 721_B Cell Lysate
Antibody Dilution: 1.0µg/ml

Host: Rabbit
Target Name: FAXC
Sample Type: 721_B Whole Cell lysates
Antibody Dilution: 1.0ug/ml