

## Product datasheet for **TA359018**

### **C19orf42 (SMIM7) Rabbit Polyclonal Antibody**

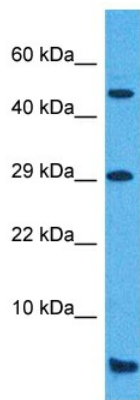
#### **Product data:**

|                         |   |
|-------------------------|---|
| Product Type:           | Primary Antibodies  |
| Applications:           | WB  |
| Reactivity:             | Human   |
| Host:                   | Rabbit  |
| Clonality:              | Polyclonal  |
| Immunogen:              | The immunogen is a synthetic peptide directed towards the middle region of human C19ORF42   |
| Specificity:            | <b>Expected reactivity:</b> Human   |
| Formulation:            | Liquid. Purified antibody supplied in 1x PBS buffer with 0.09% (w/v) sodium azide and 2% sucrose.                                       |
| Concentration:          | lot specific  |
| Purification:           | Affinity purified   |
| Conjugation:            | Unconjugated  |
| Storage:                | For short term use, store at 2-8°C up to 1 week. For long term storage, store at -20°C in small aliquots to prevent freeze-thaw cycles. |
| Stability:              | Shelf life: one year from despatch.   |
| Predicted Protein Size: | 8 kDa   |
| Gene Name:              | small integral membrane protein 7   |
| Database Link:          | <a href="#">NP_077009.2</a><br><a href="#">Entrez Gene 79086 Human</a><br><a href="#">Q9BQ49</a>  |
| Synonyms:               | C19orf42  |
| Protein Families:       | Transmembrane   |



[View online »](#)

Product images:



Host: Rabbit  
Target Name: C19orf42  
Sample Type: Thymus Tumor Lysate  
Antibody Dilution: 1.0 $\mu$ g/ml

Host: Rabbit  
Target Name: C19ORF42  
Sample Tissue: Human Thymus Tumor lysates  
Antibody Dilution: 1 $\mu$ g/ml