

## Product datasheet for **TA359008**

### **C10orf4 (FRA10AC1) Rabbit Polyclonal Antibody**

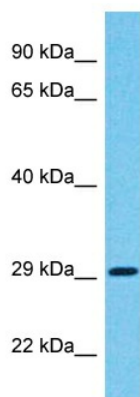
#### **Product data:**

Product Type:	Primary Antibodies
Applications:	WB
Reactivity:	Human
Host:	Rabbit
Clonality:	Polyclonal
Immunogen:	The immunogen is a synthetic peptide directed towards the C-terminal region of Human FRA10AC1
Specificity:	<b>Expected reactivity:</b> Human
Formulation:	Liquid. Purified antibody supplied in 1x PBS buffer with 0.09% (w/v) sodium azide and 2% sucrose.
Concentration:	lot specific
Purification:	Affinity Purified
Conjugation:	Unconjugated
Storage:	For short term use, store at 2-8°C up to 1 week. For long term storage, store at -20°C in small aliquots to prevent freeze-thaw cycles.
Stability:	Shelf life: one year from despatch.
Predicted Protein Size:	30kDa
Gene Name:	fragile site, folic acid type, rare, fra(10)(q23.3) or fra(10)(q24.2) candidate 1
Database Link:	<a href="#">Entrez Gene 118924 Human Q70Z53-2</a>
Background:	The protein encoded by this gene is a nuclear phosphoprotein of unknown function. The 5' UTR of this gene is part of a CpG island and contains a tandem CGG repeat region that normally consists of 8-14 repeats but can expand to over 200 repeats. The expanded allele becomes hypermethylated and is not transcribed; however, an expanded repeat region has not been associated with any disease phenotype. This gene is found within the rare FRA10A folate-sensitive fragile site.
Synonyms:	C10orf4; F26C11.1-like; FRA10A



[View online »](#)

## Product images:



Host: Rabbit  
Target Name: FRA10AC1  
Sample Tissue: Fetal Lung Lysate  
Antibody Dilution: 1.0 $\mu$ g/ml

Host: Rabbit  
Target Name: FRA10AC1  
Sample Type: Fetal Lung lysates  
Antibody Dilution: 1.0 $\mu$ g/ml