

Product datasheet for **TA359005**

FAM102A Rabbit Polyclonal Antibody

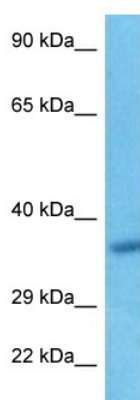
Product data:

Product Type:	Primary Antibodies
Applications:	WB
Reactivity:	Human
Host:	Rabbit
Clonality:	Polyclonal
Immunogen:	The immunogen for Anti-FAM102A antibody is: synthetic peptide directed towards the Middle region of Human F102A
Specificity:	Expected reactivity: Human
Formulation:	Liquid. Purified antibody supplied in 1x PBS buffer with 0.09% (w/v) sodium azide and 2% sucrose. <i>Note that this product is shipped as lyophilized powder to China customers.</i>
Concentration:	lot specific
Purification:	Affinity purified
Conjugation:	Unconjugated
Storage:	For short term use, store at 2-8°C up to 1 week. For long term storage, store at -20°C in small aliquots to prevent freeze-thaw cycles.
Stability:	Shelf life: one year from despatch.
Predicted Protein Size:	40 kDa
Gene Name:	family with sequence similarity 102 member A
Database Link:	Entrez Gene 399665 Human Q5T9C2-2
Synonyms:	bA203J24.7; C9orf132; C230093N12Rik; EEIG1; MGC50853



[View online »](#)

Product images:



Host: Rabbit
Target Name: F102A
Sample Tissue: Hela Cell Lysate
Antibody Dilution: 1.0 μ g/ml

Host: Rabbit
Target Name: F102A
Sample Type: Hela Whole Cell
Antibody Dilution: 1.0 μ g/ml