

Product datasheet for **TA359003**

Cylicin 1 (CYLC1) Rabbit Polyclonal Antibody

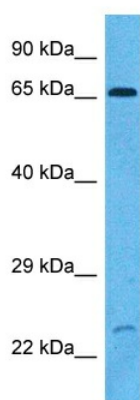
Product data:

Product Type:	Primary Antibodies
Applications:	WB
Reactivity:	Human
Host:	Rabbit
Clonality:	Polyclonal
Immunogen:	The immunogen is a synthetic peptide directed towards the N-terminal region of Human CYLC1
Specificity:	Expected reactivity: Human
Formulation:	Liquid. Purified antibody supplied in 1x PBS buffer with 0.09% (w/v) sodium azide and 2% sucrose. <i>Note that this product is shipped as lyophilized powder to China customers.</i>
Concentration:	lot specific
Purification:	Affinity purified
Conjugation:	Unconjugated
Storage:	For short term use, store at 2-8°C up to 1 week. For long term storage, store at -20°C in small aliquots to prevent freeze-thaw cycles.
Stability:	Shelf life: one year from despatch.
Predicted Protein Size:	71 kDa
Gene Name:	cylicin 1
Database Link:	NP_066941.1 Entrez Gene 1538 Human P35663
Background:	This gene encodes a sperm head cytoskeletal protein. The encoded protein is associated with the calyx of spermatozoa and spermatids. Alternative splicing results in multiple transcript variants.
Synonyms:	CYCL1; CYL; CYL1



[View online »](#)

Product images:



Host: Rabbit
Target Name: CYLC1
Sample Tissue: Fetal Liver Lysate
Antibody Dilution: 1.0 μ g/ml

WB Suggested Anti-CYLC1 antibody Titration: 1
ug/mL
Sample Type: Human Fetal Liver