

## Product datasheet for **TA358998**

### **C19orf63 (EMC10) Rabbit Polyclonal Antibody**

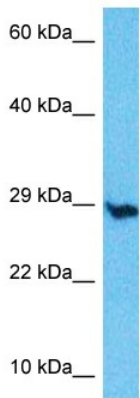
#### **Product data:**

Product Type:	Primary Antibodies
Applications:	WB
Reactivity:	Human
Host:	Rabbit
Clonality:	Polyclonal
Immunogen:	The immunogen is a synthetic peptide directed towards the C-terminal region of Human EMC10
Specificity:	<b>Expected reactivity:</b> Human
Formulation:	Liquid. Purified antibody supplied in 1x PBS buffer with 0.09% (w/v) sodium azide and 2% sucrose.
Concentration:	lot specific
Purification:	Affinity Purified
Conjugation:	Unconjugated
Storage:	For short term use, store at 2-8°C up to 1 week. For long term storage, store at -20°C in small aliquots to prevent freeze-thaw cycles.
Stability:	Shelf life: one year from despatch.
Predicted Protein Size:	28kDa
Gene Name:	ER membrane protein complex subunit 10
Database Link:	<a href="#">NP_996261</a> <a href="#">Entrez Gene 284361 Human</a> <a href="#">Q5UCC4</a>
Background:	The function of this protein remains unknown.
Synonyms:	2310044H10Rik; 5430410O10Rik; Inm02



[View online »](#)

**Product images:**



Host: Rabbit  
Target Name: EMC10  
Sample Tissue: THP-1 Cell Lysate  
Antibody Dilution: 1.0µg/ml

Host: Rabbit  
Target Name: EMC10  
Sample Type: THP-1 Whole Cell lysates  
Antibody Dilution: 1.0ug/ml