

## Product datasheet for **TA358997**

### **C12orf48 (PARPBP) Rabbit Polyclonal Antibody**

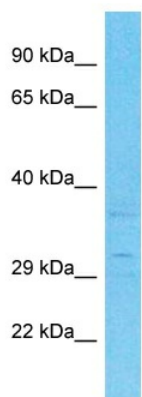
#### **Product data:**

Product Type:	Primary Antibodies
Applications:	WB
Reactivity:	Human
Host:	Rabbit
Clonality:	Polyclonal
Immunogen:	The immunogen is a synthetic peptide directed towards the C-terminal region of Human PARPBP
Specificity:	<b>Expected reactivity:</b> Human
Formulation:	Liquid. Purified antibody supplied in 1x PBS buffer with 0.09% (w/v) sodium azide and 2% sucrose.
Concentration:	lot specific
Purification:	Affinity Purified
Conjugation:	Unconjugated
Storage:	For short term use, store at 2-8°C up to 1 week. For long term storage, store at -20°C in small aliquots to prevent freeze-thaw cycles.
Stability:	Shelf life: one year from despatch.
Predicted Protein Size:	32kDa
Gene Name:	PARP1 binding protein
Database Link:	<a href="#">Entrez Gene 55010 Human Q9NWS1-5</a>
Background:	PARPBP is required to suppress inappropriate homologous recombination, thereby playing a central role DNA repair and in the maintenance of genomic stability. It antagonizes homologous recombination by interfering with the formation of the RAD51-DNA homologous recombination structure. It binds single-strand DNA and poly(A) homopolymers. It positively regulate the poly(ADP- ribosyl)ation activity of PARP1; however such function may be indirect.
Synonyms:	AROM; C12orf48; PARI



[View online »](#)

**Product images:**



Host: Rabbit  
Target Name: PARPBP  
Sample Tissue: Hela Cell Lysate  
Antibody Dilution: 1.0 $\mu$ g/ml

Host: Rabbit  
Target Name: PARPBP  
Sample Type: Hela Whole Cell lysates  
Antibody Dilution: 1.0ug/ml