

## Product datasheet for **TA358996**

### **C11orf80 Rabbit Polyclonal Antibody**

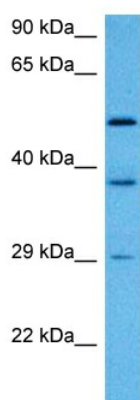
#### **Product data:**

Product Type:	Primary Antibodies
Applications:	WB
Reactivity:	Human
Host:	Rabbit
Clonality:	Polyclonal
Immunogen:	The immunogen is a synthetic peptide directed towards the C terminal region of human C11ORF80
Specificity:	<b>Expected reactivity:</b> Human <b>Homology:</b> Human: 100%; Rat: 83%
Formulation:	Liquid. Purified antibody supplied in 1x PBS buffer with 0.09% (w/v) sodium azide and 2% sucrose.
Concentration:	lot specific
Purification:	Affinity purified
Conjugation:	Unconjugated
Storage:	For short term use, store at 2-8°C up to 1 week. For long term storage, store at -20°C in small aliquots to prevent freeze-thaw cycles.
Stability:	Shelf life: one year from despatch.
Predicted Protein Size:	53 kDa
Gene Name:	chromosome 11 open reading frame 80
Database Link:	<a href="#">Entrez Gene 79703 Human Q8N6T0-2</a>
Background:	Isoform 3: Component of a topoisomerase 6 complex specifically required for meiotic recombination. Together with SPO11, mediates DNA cleavage that forms the double-strand breaks (DSB) that initiate meiotic recombination. The complex promotes relaxation of negative and positive supercoiled DNA and DNA decatenation through cleavage and ligation cycles.
Synonyms:	FLJ22531



[View online »](#)

## Product images:



Host: Rabbit  
Target Name: C11orf80  
Sample Type: DLD1 Cell Lysate  
Antibody Dilution: 1.0µg/ml

Host: Rabbit  
Target Name: C11ORF80  
Sample Tissue: Human DLD1 Whole Cell lysates  
Antibody Dilution: 1ug/ml