

## Product datasheet for **TA358987**

### **KRT33A Rabbit Polyclonal Antibody**

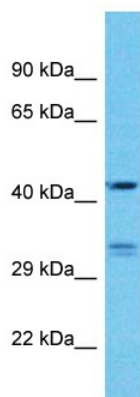
#### **Product data:**

Product Type:	Primary Antibodies
Applications:	WB
Reactivity:	Human
Host:	Rabbit
Clonality:	Polyclonal
Immunogen:	The immunogen is a synthetic peptide directed towards the C-terminal region of Human KRT33A
Specificity:	<b>Expected reactivity:</b> Human
Formulation:	Liquid. Purified antibody supplied in 1x PBS buffer with 0.09% (w/v) sodium azide and 2% sucrose.
Concentration:	lot specific
Purification:	Affinity Purified
Conjugation:	Unconjugated
Storage:	For short term use, store at 2-8°C up to 1 week. For long term storage, store at -20°C in small aliquots to prevent freeze-thaw cycles.
Stability:	Shelf life: one year from despatch.
Predicted Protein Size:	44kDa
Gene Name:	keratin 33A
Database Link:	<a href="#">NP_004129</a> <a href="#">Entrez Gene 3883 Human</a> <a href="#">O76009</a>
Background:	This gene encodes a member of the keratin gene family. This gene is one of multiple type I hair keratin genes that are clustered in a region of chromosome 17q12-q21 and have the same direction of transcription. As a type I hair keratin, the encoded protein is an acidic protein which heterodimerizes with type II keratins to form hair and nails. There are two isoforms of this protein, encoded by two separate genes, keratin 33A and keratin 33B.
Synonyms:	Ha-3I; HA3I; hHa3-I; HKA3A; K33A; Keratin-33A; Krt1-3; KRTHA3A



[View online »](#)

Product images:



Host: Rabbit  
Target Name: KRT33A  
Sample Tissue: Placenta Lysate  
Antibody Dilution: 1.0 $\mu$ g/ml

Host: Rabbit  
Target Name: KRT33A  
Sample Type: Placenta lysates  
Antibody Dilution: 1.0ug/ml