

Product datasheet for **TA358980**

COL22A1 Rabbit Polyclonal Antibody

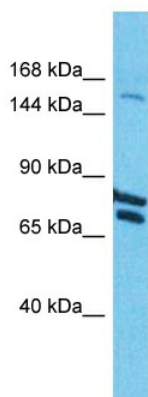
Product data:

Product Type:	Primary Antibodies
Applications:	WB
Reactivity:	Human
Host:	Rabbit
Clonality:	Polyclonal
Immunogen:	The immunogen is a synthetic peptide directed towards the N-terminal region of Human COL22A1
Specificity:	Expected reactivity: Human
Formulation:	Liquid. Purified antibody supplied in 1x PBS buffer with 0.09% (w/v) sodium azide and 2% sucrose. <i>Note that this product is shipped as lyophilized powder to China customers.</i>
Concentration:	lot specific
Purification:	Affinity Purified
Conjugation:	Unconjugated
Storage:	For short term use, store at 2-8°C up to 1 week. For long term storage, store at -20°C in small aliquots to prevent freeze-thaw cycles.
Stability:	Shelf life: one year from despatch.
Predicted Protein Size:	145kDa
Gene Name:	collagen type XXII alpha 1
Database Link:	XP_005250867 Entrez Gene 169044 Human Q8NFW1-3
Background:	COL22A1, a member of the FACIT (fibrillar-associated collagens with interrupted triple helices) subgroup of the collagen protein family, specifically localizes to tissue junctions.
Synonyms:	COL22A1



[View online »](#)

Product images:



Host: Rabbit
Target Name: COL22A1
Sample Tissue: HT1080 Cell Lysate
Antibody Dilution: 1.0 μ g/ml

Host: Rabbit
Target Name: COL22A1
Sample Type: HT1080 Whole Cell lysates
Antibody Dilution: 1.0 μ g/ml