

Product datasheet for **TA358976**

SH3D20 (ARHGAP27) Rabbit Polyclonal Antibody

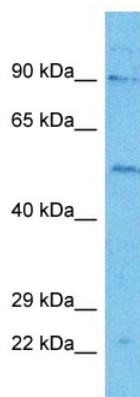
Product data:

Product Type:	Primary Antibodies
Applications:	WB
Reactivity:	Human
Host:	Rabbit
Clonality:	Polyclonal
Immunogen:	The immunogen is a synthetic peptide directed towards the middle region of Human RHG27
Specificity:	Expected reactivity: Cow, Dog, Horse, Human, Mouse, Pig, Rabbit, Rat Homology: Cow: 83%; Dog: 86%; Horse: 85%; Human: 100%; Mouse: 93%; Pig: 86%; Rabbit: 83%; Rat: 93%
Formulation:	Liquid. Purified antibody supplied in 1x PBS buffer with 0.09% (w/v) sodium azide and 2% sucrose. <i>Note that this product is shipped as lyophilized powder to China customers.</i>
Concentration:	lot specific
Purification:	Affinity Purified
Conjugation:	Unconjugated
Storage:	For short term use, store at 2-8°C up to 1 week. For long term storage, store at -20°C in small aliquots to prevent freeze-thaw cycles.
Stability:	Shelf life: one year from despatch.
Predicted Protein Size:	94kDa
Gene Name:	Rho GTPase activating protein 27
Database Link:	Entrez Gene 201176 Human Q6ZUM4-3
Background:	This gene encodes a member of a large family of proteins that activate Rho-type guanosine triphosphate (GTP) metabolizing enzymes. The encoded protein may play a role in clathrin-mediated endocytosis. Alternatively spliced transcript variants encoding multiple isoforms have been observed for this gene.
Synonyms:	CAMGAP1; FLJ35572; FLJ43547; MGC120624



[View online »](#)

Product images:



Host: Rabbit
Target Name: RHG27
Sample Tissue: HepG2 Cell Lysate
Antibody Dilution: 1.0 μ g/ml

Host: Rabbit
Target Name: RHG27
Sample Type: HepG2 Whole Cell lysates
Antibody Dilution: 1 ug/ml