

Product datasheet for **TA358974**

SPINK9 Rabbit Polyclonal Antibody

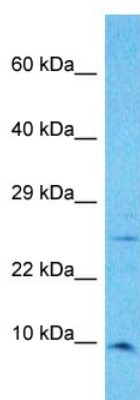
Product data:

Product Type:	Primary Antibodies
Applications:	WB
Reactivity:	Human
Host:	Rabbit
Clonality:	Polyclonal
Immunogen:	The immunogen is a synthetic peptide directed towards the middle region of Human SPINK9
Specificity:	Expected reactivity: Human
Formulation:	Liquid. Purified antibody supplied in 1x PBS buffer with 0.09% (w/v) sodium azide and 2% sucrose.
Concentration:	lot specific
Purification:	Affinity Purified
Conjugation:	Unconjugated
Storage:	For short term use, store at 2-8°C up to 1 week. For long term storage, store at -20°C in small aliquots to prevent freeze-thaw cycles.
Stability:	Shelf life: one year from despatch.
Predicted Protein Size:	11kDa
Gene Name:	serine peptidase inhibitor, Kazal type 9
Database Link:	Entrez Gene 643394 Human Q5DT21
Background:	SPINK9 is a serine protease inhibitor which specifically inhibits KLK5. It may contribute to the regulation of the desquamation process in skin by inhibiting KLK5.
Synonyms:	LEKT12



[View online »](#)

Product images:



Host: Rabbit
Target Name: SPINK9
Sample Tissue: 786-0 Cell Lysate
Antibody Dilution: 1.0µg/ml

Host: Rabbit
Target Name: SPINK9
Sample Type: 786-0 Whole Cell lysates
Antibody Dilution: 1.0ug/ml