

Product datasheet for **TA358973**

P70 S6 Kinase beta (RPS6KB2) Rabbit Polyclonal Antibody

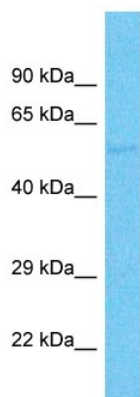
Product data:

Product Type:	Primary Antibodies
Applications:	WB
Reactivity:	Human
Host:	Rabbit
Clonality:	Polyclonal
Immunogen:	The immunogen is a synthetic peptide directed towards the C-terminal region of Human RPS6KB2
Specificity:	Expected reactivity: Human
Formulation:	Liquid. Purified antibody supplied in 1x PBS buffer with 0.09% (w/v) sodium azide and 2% sucrose. <i>Note that this product is shipped as lyophilized powder to China customers.</i>
Concentration:	lot specific
Purification:	Affinity Purified
Conjugation:	Unconjugated
Storage:	For short term use, store at 2-8°C up to 1 week. For long term storage, store at -20°C in small aliquots to prevent freeze-thaw cycles.
Stability:	Shelf life: one year from despatch.
Predicted Protein Size:	53kDa
Gene Name:	ribosomal protein S6 kinase B2
Database Link:	NP_003943 Entrez Gene 6199 Human Q9UBS0
Background:	RPS6KB2 phosphorylates specifically ribosomal protein S6.
Synonyms:	KLS; p70(S6K)-beta; P70-beta; P70-beta-1; P70-beta-2; p70-S6KB; p70S6Kb; S6K-beta; S6K-beta2; S6K2; SRK; STK14B



[View online »](#)

Product images:



Host: Rabbit
Target Name: RPS6KB2
Sample Tissue: Hela Cell Lysate
Antibody Dilution: 1.0 μ g/ml

Host: Rabbit
Target Name: RPS6KB2
Sample Type: Hela Whole Cell lysates
Antibody Dilution: 1.0ug/ml