

Product datasheet for **TA358972**

Isochorismatase domain containing protein 1 (ISOC1) Rabbit Polyclonal Antibody

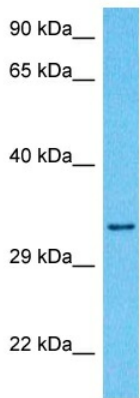
Product data:

Product Type:	Primary Antibodies
Applications:	WB
Reactivity:	Human
Host:	Rabbit
Clonality:	Polyclonal
Immunogen:	The immunogen is a synthetic peptide directed towards the C-terminal region of Human ISOC1
Specificity:	Expected reactivity: Human
Formulation:	Liquid. Purified antibody supplied in 1x PBS buffer with 0.09% (w/v) sodium azide and 2% sucrose.
Concentration:	lot specific
Purification:	Affinity Purified
Conjugation:	Unconjugated
Storage:	For short term use, store at 2-8°C up to 1 week. For long term storage, store at -20°C in small aliquots to prevent freeze-thaw cycles.
Stability:	Shelf life: one year from despatch.
Predicted Protein Size:	32kDa
Gene Name:	isochorismatase domain containing 1
Database Link:	NP_057132 Entrez Gene 51015 Human Q96CN7
Background:	The function of this protein remains unknown.
Synonyms:	CGI-111



[View online »](#)

Product images:



Host: Rabbit
Target Name: ISOC1
Sample Tissue: MCF7 Cell Lysate
Antibody Dilution: 1.0µg/ml

Host: Rabbit
Target Name: ISOC1
Sample Type: MCF7 Whole Cell lysates
Antibody Dilution: 1.0ug/ml