

Product datasheet for **TA358970**

SAPAP3 (DLGAP3) Rabbit Polyclonal Antibody

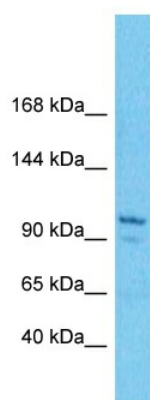
Product data:

Product Type:	Primary Antibodies
Applications:	WB
Reactivity:	Human
Host:	Rabbit
Clonality:	Polyclonal
Immunogen:	The immunogen is a synthetic peptide directed towards the N-terminal region of Human DLGAP3
Specificity:	Expected reactivity: Human
Formulation:	Liquid. Purified antibody supplied in 1x PBS buffer with 0.09% (w/v) sodium azide and 2% sucrose. <i>Note that this product is shipped as lyophilized powder to China customers.</i>
Concentration:	lot specific
Purification:	Affinity Purified
Conjugation:	Unconjugated
Storage:	For short term use, store at 2-8°C up to 1 week. For long term storage, store at -20°C in small aliquots to prevent freeze-thaw cycles.
Stability:	Shelf life: one year from despatch.
Predicted Protein Size:	107kDa
Gene Name:	DLG associated protein 3
Database Link:	XP_005271148 Entrez Gene 58512 Human O95886
Background:	DLGAP3 may play a role in the molecular organization of synapses and neuronal cell signaling. It could be an adapter protein linking ion channel to the subsynaptic cytoskeleton. It may induce enrichment of PSD-95/SAP90 at the plasma membrane.
Synonyms:	DAP-3; DAP3; OTTHUMP00000004180; SAPAP3



[View online »](#)

Product images:



Host: Rabbit
Target Name: DLGAP3
Sample Tissue: 721_B Cell Lysate
Antibody Dilution: 1.0µg/ml

Host: Rabbit
Target Name: DLGAP3
Sample Type: 721_B Whole Cell lysates
Antibody Dilution: 1.0ug/ml