

Product datasheet for **TA358969**

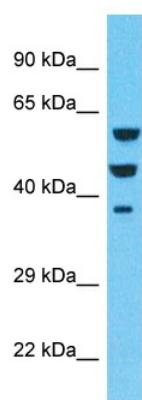
EPS8 like protein 3 (EPS8L3) Rabbit Polyclonal Antibody

Product data:

| | |
|-------------------------|---|
| Product Type: | Primary Antibodies |
| Applications: | WB |
| Reactivity: | Human |
| Host: | Rabbit |
| Clonality: | Polyclonal |
| Immunogen: | The immunogen is a synthetic peptide directed towards the middle region of Human EPS8L3 |
| Specificity: | Expected reactivity: Human |
| Formulation: | Liquid. Purified antibody supplied in 1x PBS buffer with 0.09% (w/v) sodium azide and 2% sucrose. |
| Concentration: | lot specific |
| Purification: | Affinity Purified |
| Conjugation: | Unconjugated |
| Storage: | For short term use, store at 2-8°C up to 1 week. For long term storage, store at -20°C in small aliquots to prevent freeze-thaw cycles. |
| Stability: | Shelf life: one year from despatch. |
| Predicted Protein Size: | 61kDa |
| Gene Name: | EPS8 like 3 |
| Database Link: | Entrez Gene 79574 Human Q8TE67-2 |
| Background: | This gene encodes a protein that is related to epidermal growth factor receptor pathway substrate 8 (EPS8), a substrate for the epidermal growth factor receptor. The function of this protein is unknown. Alternatively spliced transcript variants encoding different isoforms exist. |
| Synonyms: | EPS8R3; FLJ21522; MGC16817 |

[View online »](#)

Product images:



Host: Rabbit
Target Name: EPS8L3
Sample Tissue: NCI-H226 Cell Lysate
Antibody Dilution: 1.0µg/ml

Host: Rabbit
Target Name: EPS8L3
Sample Type: NCI-H226 Whole Cell lysates
Antibody Dilution: 1.0ug/ml