

## Product datasheet for **TA358966**

### SGTB Rabbit Polyclonal Antibody

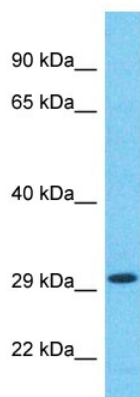
#### Product data:

Product Type:	Primary Antibodies
Applications:	WB
Reactivity:	Human
Host:	Rabbit
Clonality:	Polyclonal
Immunogen:	The immunogen is a synthetic peptide directed towards the N-terminal region of Human SGTB
Specificity:	<b>Expected reactivity:</b> Human
Formulation:	Liquid. Purified antibody supplied in 1x PBS buffer with 0.09% (w/v) sodium azide and 2% sucrose.
Concentration:	lot specific
Purification:	Affinity Purified
Conjugation:	Unconjugated
Storage:	For short term use, store at 2-8°C up to 1 week. For long term storage, store at -20°C in small aliquots to prevent freeze-thaw cycles.
Stability:	Shelf life: one year from despatch.
Predicted Protein Size:	33kDa
Gene Name:	small glutamine rich tetratricopeptide repeat containing beta
Database Link:	<a href="#">XP_005248605</a> <a href="#">Entrez Gene 54557 Human</a> <a href="#">Q96EQ0</a>
Background:	SGTB is a co-chaperone that binds directly to HSC70 and HSP70 and regulates their ATPase activity.
Synonyms:	Beta-SGT; FLJ39002; SGT2



[View online »](#)

## Product images:



Host: Rabbit  
Target Name: SGTB  
Sample Tissue: HeLa Cell Lysate  
Antibody Dilution: 1.0 $\mu$ g/ml

Host: Rabbit  
Target Name: SGTB  
Sample Type: HeLa Whole Cell lysates  
Antibody Dilution: 1.0ug/ml