

Product datasheet for **TA358962**

Fez2 Rabbit Polyclonal Antibody

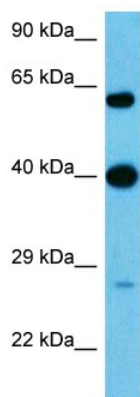
Product data:

Product Type:	Primary Antibodies
Applications:	WB
Reactivity:	Rat
Host:	Rabbit
Clonality:	Polyclonal
Immunogen:	The immunogen is a synthetic peptide directed towards the C-terminal region of Rat FEZ2
Specificity:	Expected reactivity: Rat
Formulation:	Liquid. Purified antibody supplied in 1x PBS buffer with 0.09% (w/v) sodium azide and 2% sucrose.
Concentration:	lot specific
Purification:	Affinity purified
Conjugation:	Unconjugated
Storage:	For short term use, store at 2-8°C up to 1 week. For long term storage, store at -20°C in small aliquots to prevent freeze-thaw cycles.
Stability:	Shelf life: one year from despatch.
Predicted Protein Size:	41 kDa
Gene Name:	fasciculation and elongation protein zeta 2
Database Link:	NP_446052.2 Entrez Gene 94269 Rat P97578
Background:	FEZ2 is involved in axonal outgrowth and fasciculation.
Synonyms:	HUM3CL; MGC117372; Zygin-2



[View online »](#)

Product images:



Host: Rabbit
Target Name: FEZ2
Sample Tissue: Rat Pancreas Lysate
Antibody Dilution: 2.0µg/ml

Host: Rabbit
Target Name: FEZ2
Sample Type: Rat Pancreas
Antibody Dilution: 1.0ug/ml