

Product datasheet for **TA358960**

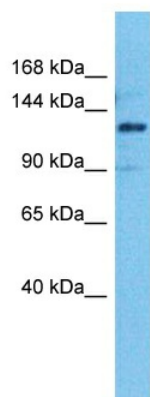
ANKFY1 Rabbit Polyclonal Antibody

Product data:

Product Type:	Primary Antibodies
Applications:	WB
Reactivity:	Human
Host:	Rabbit
Clonality:	Polyclonal
Immunogen:	The immunogen for Anti-ANKFY1 antibody is: synthetic peptide directed towards the N-terminal region of Human ANFY1
Specificity:	Expected reactivity: Human
Formulation:	Liquid. Purified antibody supplied in 1x PBS buffer with 0.09% (w/v) sodium azide and 2% sucrose.
Concentration:	lot specific
Purification:	Affinity purified
Conjugation:	Unconjugated
Storage:	For short term use, store at 2-8°C up to 1 week. For long term storage, store at -20°C in small aliquots to prevent freeze-thaw cycles.
Stability:	Shelf life: one year from despatch.
Predicted Protein Size:	128 kDa
Gene Name:	ankyrin repeat and FYVE domain containing 1
Database Link:	XP_005256736.1 Entrez Gene 51479 Human Q9P2R3
Background:	This gene encodes a cytoplasmic protein that contains a coiled-coil structure and a BTB/POZ domain at its N-terminus, ankyrin repeats in the middle portion, and a FYVE-finger motif at its C-terminus. This protein belongs to a subgroup of double zinc finger proteins which may be involved in vesicle or protein transport. Alternate splicing results in multiple transcript variants of this gene.
Synonyms:	ANKHZN; DKFZp686M19106; KIAA1255; Rabankyrin-5; ZFYVE14



[View online »](#)

Product images:

Host: Rabbit
Target Name: ANFY1
Sample Tissue: HCT116 Cell Lysate
Antibody Dilution: 1.0 μ g/ml

Host: Rabbit
Target Name: ANFY1
Sample Type: HCT116 Whole Cell
Antibody Dilution: 1.0 μ g/ml