

Product datasheet for **TA358958**

Tumor necrosis factor alpha induced protein 8 like protein 2 (TNFAIP8L2) Rabbit Polyclonal Antibody

Product data:

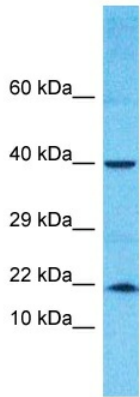
Product Type:	Primary Antibodies
Applications:	WB
Reactivity:	Human
Host:	Rabbit
Clonality:	Polyclonal
Immunogen:	The immunogen is a synthetic peptide directed towards the N-terminal region of Human TNFAIP8L2
Specificity:	Expected reactivity: Cow, Dog, Guinea Pig, Horse, Human, Mouse, Pig, Rabbit, Rat Homology: Cow: 93%; Dog: 100%; Guinea Pig: 93%; Horse: 100%; Human: 100%; Mouse: 93%; Pig: 100%; Rabbit: 100%; Rat: 93%
Formulation:	Liquid. Purified antibody supplied in 1x PBS buffer with 0.09% (w/v) sodium azide and 2% sucrose.
Concentration:	lot specific
Purification:	Affinity Purified
Conjugation:	Unconjugated
Storage:	For short term use, store at 2-8°C up to 1 week. For long term storage, store at -20°C in small aliquots to prevent freeze-thaw cycles.
Stability:	Shelf life: one year from despatch.
Predicted Protein Size:	20kDa
Gene Name:	TNF alpha induced protein 8 like 2
Database Link:	Entrez Gene 79626 Human Q6P589
Background:	TNFAIP8L2 acts as a negative regulator of innate and adaptive immunity by maintaining immune homeostasis. It is a negative regulator of Toll-like receptor and T-cell receptor function. It prevents hyperresponsiveness of the immune system and maintains immune homeostasis and inhibits JUN/AP1 and NF-kappa-B activation. TNFAIP8L2 promotes Fas-induced apoptosis.



[View online »](#)

Synonyms: FLJ23467; TIPE2

Product images:



Host: Rabbit
Target Name: TNFAIP8L2
Sample Tissue: MCF7 Cell Lysate
Antibody Dilution: 1.0µg/ml

Host: Rabbit
Target Name: TNFAIP8L2
Sample Type: MCF7 Whole cell lysates
Antibody Dilution: 1.0ug/ml