

## Product datasheet for **TA358957**

### SLC35B2 Rabbit Polyclonal Antibody

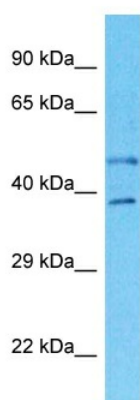
#### Product data:

Product Type:	Primary Antibodies
Applications:	WB
Reactivity:	Human
Host:	Rabbit
Clonality:	Polyclonal
Immunogen:	The immunogen is a synthetic peptide directed towards the N-terminal region of Human SLC35B2
Specificity:	<b>Expected reactivity:</b> Human
Formulation:	Liquid. Purified antibody supplied in 1x PBS buffer with 0.09% (w/v) sodium azide and 2% sucrose. <i>Note that this product is shipped as lyophilized powder to China customers.</i>
Concentration:	lot specific
Purification:	Affinity Purified
Conjugation:	Unconjugated
Storage:	For short term use, store at 2-8°C up to 1 week. For long term storage, store at -20°C in small aliquots to prevent freeze-thaw cycles.
Stability:	Shelf life: one year from despatch.
Predicted Protein Size:	42kDa
Gene Name:	solute carrier family 35 member B2
Database Link:	<a href="#">Entrez Gene 347734 Human</a> <a href="#">Q8TB61-3</a>
Background:	Sulfotransferases use an activated form of sulfate, 3-prime-phosphoadenosine 5-prime-phosphosulfate (PAPS), as a common sulfate donor for sulfation of glycoproteins, proteoglycans, and glycolipids in the endoplasmic reticulum and Golgi apparatus. SLC35B2 is located in the microsomal membrane and transports PAPS from the cytosol, where it is synthesized, into the Golgi lumen.
Synonyms:	PAPST1; SLL; UGTrel4



[View online »](#)

## Product images:



Host: Rabbit  
Target Name: SLC35B2  
Sample Tissue: 786-0 Cell Lysate  
Antibody Dilution: 1.0 $\mu$ g/ml

Host: Rabbit  
Target Name: SLC35B2  
Sample Type: 786-0 Whole Cell lysates  
Antibody Dilution: 1.0 $\mu$ g/ml