

Product datasheet for **TA358955**

PRY Rabbit Polyclonal Antibody

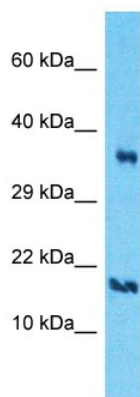
Product data:

Product Type:	Primary Antibodies
Applications:	WB
Reactivity:	Human
Host:	Rabbit
Clonality:	Polyclonal
Immunogen:	The immunogen is a synthetic peptide directed towards the N-terminal region of Human PRY
Specificity:	Expected reactivity: Human
Formulation:	Liquid. Purified antibody supplied in 1x PBS buffer with 0.09% (w/v) sodium azide and 2% sucrose. <i>Note that this product is shipped as lyophilized powder to China customers.</i>
Concentration:	lot specific
Purification:	Affinity Purified
Conjugation:	Unconjugated
Storage:	For short term use, store at 2-8°C up to 1 week. For long term storage, store at -20°C in small aliquots to prevent freeze-thaw cycles.
Stability:	Shelf life: one year from despatch.
Predicted Protein Size:	16kDa
Gene Name:	PTPN13-like, Y-linked
Database Link:	NP_004667 Entrez Gene 9081 Human O14603
Background:	This gene is located in the nonrecombining portion of the Y chromosome, and expressed specifically in testis. It encodes a protein which has a low degree of similarity to protein tyrosine phosphatase, non-receptor type 13. Two nearly identical copies of this gene exist within a palindromic region. This record represents the more telomeric copy.
Synonyms:	PRY1; PTPN13LY; PTPN13LY2



[View online »](#)

Product images:



Host: Rabbit
Target Name: PRY
Sample Tissue: A549 Cell Lysate
Antibody Dilution: 1.0 μ g/ml

Host: Rabbit
Target Name: PRY
Sample Type: A549 Whole Cell lysates
Antibody Dilution: 1.0 μ g/ml