

Product datasheet for **TA358950**

GPR31 Rabbit Polyclonal Antibody

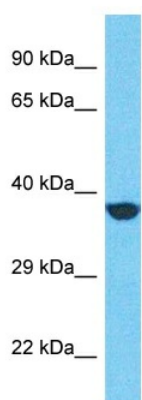
Product data:

Product Type:	Primary Antibodies
Applications:	WB
Reactivity:	Human
Host:	Rabbit
Clonality:	Polyclonal
Immunogen:	The immunogen is a synthetic peptide directed towards the C-terminal region of Human GPR31
Specificity:	Expected reactivity: Human
Formulation:	Liquid. Purified antibody supplied in 1x PBS buffer with 0.09% (w/v) sodium azide and 2% sucrose. <i>Note that this product is shipped as lyophilized powder to China customers.</i>
Concentration:	lot specific
Purification:	Affinity Purified
Conjugation:	Unconjugated
Storage:	For short term use, store at 2-8°C up to 1 week. For long term storage, store at -20°C in small aliquots to prevent freeze-thaw cycles.
Stability:	Shelf life: one year from despatch.
Predicted Protein Size:	35kDa
Gene Name:	G protein-coupled receptor 31
Database Link:	NP_005290 Entrez Gene 2853 Human O00270
Background:	GPR31 is a high-affinity receptor for 12-(S)-hydroxy-5,8,10,14- eicosatetraenoic acid (12-S-HETE). 12-(S)-HETE is an arachidonic acid metabolite secreted by platelets and tumor cells, and known to induce endothelial cells retraction allowing invasive cell access to the subendothelial matrix, which is a critical step for extravasation or metastasis. Ligand-binding lead to activation of ERK1/2 (MAPK3/MAPK1), MEK, and NF-kappa-B.
Synonyms:	12-HETER; HETER; HETER1



[View online »](#)

Product images:



Host: Rabbit
Target Name: GPR31
Sample Tissue: HepG2 Cell Lysate
Antibody Dilution: 1.0 μ g/ml

Host: Rabbit
Target Name: GPR31
Sample Type: HepG2 Whole Cell lysates
Antibody Dilution: 1.0 μ g/ml