

Product datasheet for **TA358949**

EPHA10 Rabbit Polyclonal Antibody

Product data:

Product Type:	Primary Antibodies
Applications:	WB
Reactivity:	Human
Host:	Rabbit
Clonality:	Polyclonal
Immunogen:	The immunogen is a synthetic peptide directed towards the C terminal region of human EPHA10
Specificity:	Expected reactivity: Human Homology: Cow: 100%; Goat: 82%; Guinea Pig: 93%; Horse: 93%; Human: 100%; Mouse: 93%; Rabbit: 100%; Rat: 100%; Sheep: 82%
Formulation:	Liquid. Purified antibody supplied in 1x PBS buffer with 0.09% (w/v) sodium azide and 2% sucrose. <i>Note that this product is shipped as lyophilized powder to China customers.</i>
Concentration:	lot specific
Purification:	Affinity purified
Conjugation:	Unconjugated
Storage:	For short term use, store at 2-8°C up to 1 week. For long term storage, store at -20°C in small aliquots to prevent freeze-thaw cycles.
Stability:	Shelf life: one year from despatch.
Predicted Protein Size:	110 kDa
Gene Name:	EPH receptor A10
Database Link:	NP_001092909 Entrez Gene 284656 Human Q5JZY3
Background:	Ephrin receptors, the largest subfamily of receptor tyrosine kinases (RTKs), and their ephrin ligands are important mediators of cell-cell communication regulating cell attachment, shape, and mobility in neuronal and epithelial cells. See MIM 179610 for additional background on Eph receptors and ephrins.

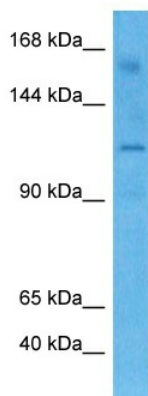


[View online »](#)

Synonyms: FLJ16103; FLJ33655; MGC43817

Protein Families: Druggable Genome, Protein Kinase

Product images:



Host: Rabbit
Target Name: EPHA10
Sample Type: HeLa Cell Lysate
Antibody Dilution: 1.0 μ g/ml

Host: Rabbit
Target Name: EPHA10
Sample Tissue: Human HeLa Whole Cell lysates
Antibody Dilution: 1 μ g/ml