

## Product datasheet for **TA358946**

### Cell adhesion molecule 4 (CADM4) Rabbit Polyclonal Antibody

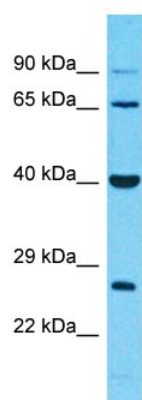
#### Product data:

Product Type:	Primary Antibodies
Applications:	WB
Reactivity:	Human
Host:	Rabbit
Clonality:	Polyclonal
Immunogen:	The immunogen is a synthetic peptide directed towards the middle region of Human CADM4
Specificity:	<b>Expected reactivity:</b> Cow, Dog, Guinea Pig, Horse, Human, Mouse, Rabbit, Rat <b>Homology:</b> Cow: 86%; Dog: 93%; Guinea Pig: 93%; Horse: 93%; Human: 100%; Mouse: 93%; Rabbit: 93%; Rat: 93%
Formulation:	Liquid. Purified antibody supplied in 1x PBS buffer with 0.09% (w/v) sodium azide and 2% sucrose. <i>Note that this product is shipped as lyophilized powder to China customers.</i>
Concentration:	lot specific
Purification:	Affinity Purified
Conjugation:	Unconjugated
Storage:	For short term use, store at 2-8°C up to 1 week. For long term storage, store at -20°C in small aliquots to prevent freeze-thaw cycles.
Stability:	Shelf life: one year from despatch.
Predicted Protein Size:	42kDa
Gene Name:	cell adhesion molecule 4
Database Link:	<a href="#">NP_660339</a> <a href="#">Entrez Gene 199731 Human</a> <a href="#">Q8NFZ8</a>
Background:	CADM4 is involved in the cell-cell adhesion. It has calcium- and magnesium-independent cell-cell adhesion activity. It may have tumor-suppressor activity.
Synonyms:	IGSF4C; Necl-4; NECL4; synCAM4; TSLL2
Protein Families:	Transmembrane



[View online »](#)

## Product images:



Host: Rabbit  
Target Name: CADM4  
Sample Tissue: NCI-H226 Cell Lysate  
Antibody Dilution: 1.0 $\mu$ g/ml

Host: Rabbit  
Target Name: CADM4  
Sample Tissue: Human NCI-H226 Whole Cell  
Antibody Dilution: 1 $\mu$ g/ml