

## Product datasheet for **TA358944**

### anoctamin 5 (ANO5) Rabbit Polyclonal Antibody

#### Product data:

Product Type:	Primary Antibodies
Applications:	WB
Reactivity:	Human
Host:	Rabbit
Clonality:	Polyclonal
Immunogen:	The immunogen is a synthetic peptide directed towards the N terminal region of human ANO5
Specificity:	<b>Expected reactivity:</b> Human <b>Homology:</b> Dog: 92%; Guinea Pig: 83%; Horse: 92%; Human: 100%; Pig: 92%; Rabbit: 93%; Rat: 83%
Formulation:	Liquid. Purified antibody supplied in 1x PBS buffer with 0.09% (w/v) sodium azide and 2% sucrose. <i>Note that this product is shipped as lyophilized powder to China customers.</i>
Concentration:	lot specific
Purification:	Affinity purified
Conjugation:	Unconjugated
Storage:	For short term use, store at 2-8°C up to 1 week. For long term storage, store at -20°C in small aliquots to prevent freeze-thaw cycles.
Stability:	Shelf life: one year from despatch.
Predicted Protein Size:	107 kDa
Gene Name:	anoctamin 5
Database Link:	<a href="#">NP_998764.1</a> <a href="#">Entrez Gene 203859 Human</a> <a href="#">Q75V66</a>
Background:	This gene encodes a member of the anoctamin family of transmembrane proteins. The encoded protein is likely a calcium activated chloride channel. Mutations in this gene have been associated with gnathodiaphyseal dysplasia. Alternatively spliced transcript variants have been described.

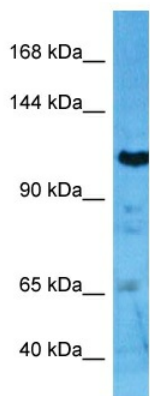


[View online »](#)

Synonyms: GDD1; TMEM16E

Protein Families: Transmembrane

### Product images:



Host: Rabbit  
Target Name: ANO5  
Sample Type: 293T Cell Lysate  
Antibody Dilution: 1.0 $\mu$ g/ml

Host: Rabbit  
Target Name: ANO5  
Sample Tissue: Human 293T Whole Cell lysates  
Antibody Dilution: 1 $\mu$ g/ml