

Product datasheet for **TA358943**

VPREB3 Rabbit Polyclonal Antibody

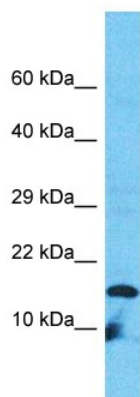
Product data:

Product Type:	Primary Antibodies
Applications:	WB
Reactivity:	Human
Host:	Rabbit
Clonality:	Polyclonal
Immunogen:	The immunogen is a synthetic peptide directed towards the middle region of Human VPREB3
Specificity:	Expected reactivity: Human
Formulation:	Liquid. Purified antibody supplied in 1x PBS buffer with 0.09% (w/v) sodium azide and 2% sucrose.
Concentration:	lot specific
Purification:	Affinity Purified
Conjugation:	Unconjugated
Storage:	For short term use, store at 2-8°C up to 1 week. For long term storage, store at -20°C in small aliquots to prevent freeze-thaw cycles.
Stability:	Shelf life: one year from despatch.
Predicted Protein Size:	13kDa
Gene Name:	pre-B lymphocyte 3
Database Link:	NP_037510 Entrez Gene 29802 Human Q9UKI3
Background:	The protein encoded by this gene is the human homolog of the mouse VpreB3 (8HS20) protein, and is specifically expressed in cell lines representative of all stages of B-cell differentiation. It is also related to VPREB1 and other members of the immunoglobulin supergene family. This protein associates with membrane mu heavy chains early in the course of pre-B cell receptor biosynthesis. The precise function of the protein is not known, but it may contribute to mu chain transport in pre-B cells.
Synonyms:	8HS20; N27C7-2



[View online »](#)

Product images:



Host: Rabbit
Target Name: VPREB3
Sample Tissue: HT1080 Cell Lysate
Antibody Dilution: 1.0 μ g/ml

Host: Rabbit
Target Name: VPREB3
Sample Type: HT1080 Whole Cell lysates
Antibody Dilution: 1.0 μ g/ml