

## Product datasheet for **TA358936**

### EXOC3L2 Rabbit Polyclonal Antibody

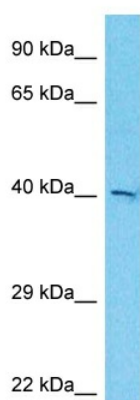
#### Product data:

Product Type:	Primary Antibodies
Applications:	WB
Reactivity:	Human
Host:	Rabbit
Clonality:	Polyclonal
Immunogen:	The immunogen is a synthetic peptide directed towards the middle region of Human EX3L2
Specificity:	<b>Expected reactivity:</b> Cow, Dog, Guinea Pig, Human, Rat <b>Homology:</b> Cow: 93%; Dog: 93%; Guinea Pig: 100%; Human: 100%; Rat: 100%
Formulation:	Liquid. Purified antibody supplied in 1x PBS buffer with 0.09% (w/v) sodium azide and 2% sucrose.
Concentration:	lot specific
Purification:	Affinity purified
Conjugation:	Unconjugated
Storage:	For short term use, store at 2-8°C up to 1 week. For long term storage, store at -20°C in small aliquots to prevent freeze-thaw cycles.
Stability:	Shelf life: one year from despatch.
Predicted Protein Size:	44kDa
Gene Name:	exocyst complex component 3-like 2
Database Link:	<a href="#">NP_612635</a> <a href="#">Entrez Gene 90332 Human</a> <a href="#">Q2M3D2</a>
Background:	The protein encoded by this gene is upregulated by vascular endothelial growth factor A and interacts with exocyst complex component 4. The encoded protein may be part of an exocyst complex that plays a role in cell membrane dynamics. Mutations in this gene may be associated with Alzheimer's disease.
Synonyms:	FLJ36147; MGC16332; OTTHUMP00000207128; XTP7



[View online »](#)

## Product images:



Host: Rabbit  
Target Name: EX3L2  
Sample Tissue: Fetal Kidney Lysate  
Antibody Dilution: 1.0µg/ml

Host: Rabbit  
Target Name: EX3L2  
Sample Type: Fetal Kidney lysates  
Antibody Dilution: 1.0ug/ml