

## Product datasheet for **TA358935**

### **GALK2 Rabbit Polyclonal Antibody**

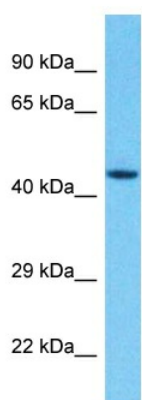
#### **Product data:**

Product Type:	Primary Antibodies
Applications:	WB
Reactivity:	Human
Host:	Rabbit
Clonality:	Polyclonal
Immunogen:	The immunogen is a synthetic peptide directed towards the C-terminal region of Human GALK2
Specificity:	<b>Expected reactivity:</b> Human
Formulation:	Liquid. Purified antibody supplied in 1x PBS buffer with 0.09% (w/v) sodium azide and 2% sucrose. <i>Note that this product is shipped as lyophilized powder to China customers.</i>
Concentration:	lot specific
Purification:	Affinity Purified
Conjugation:	Unconjugated
Storage:	For short term use, store at 2-8°C up to 1 week. For long term storage, store at -20°C in small aliquots to prevent freeze-thaw cycles.
Stability:	Shelf life: one year from despatch.
Predicted Protein Size:	50kDa
Gene Name:	galactokinase 2
Database Link:	<a href="#">NP_002035</a> <a href="#">Entrez Gene 2585 Human</a> <a href="#">Q01415</a>
Background:	This gene encodes a highly efficient N-acetylgalactosamine (GalNAc) kinase, which has galactokinase activity when galactose is present at high concentrations. Alternatively spliced transcript variants encoding different isoforms have been found for this gene.
Synonyms:	GK2; MGC1745



[View online »](#)

## Product images:



Host: Rabbit  
Target Name: GALK2  
Sample Tissue: HepG2 Cell Lysate  
Antibody Dilution: 1.0 $\mu$ g/ml

Host: Rabbit  
Target Name: GALK2  
Sample Type: HepG2 Whole Cell lysates  
Antibody Dilution: 1.0ug/ml