

Product datasheet for **TA358933**

SGIP1 Rabbit Polyclonal Antibody

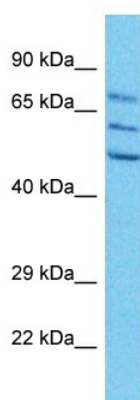
Product data:

Product Type:	Primary Antibodies
Applications:	WB
Reactivity:	Human
Host:	Rabbit
Clonality:	Polyclonal
Immunogen:	The immunogen is a synthetic peptide directed towards the middle region of Human SGIP1
Specificity:	Expected reactivity: Human
Formulation:	Liquid. Purified antibody supplied in 1x PBS buffer with 0.09% (w/v) sodium azide and 2% sucrose.
Concentration:	lot specific
Purification:	Affinity Purified
Conjugation:	Unconjugated
Storage:	For short term use, store at 2-8°C up to 1 week. For long term storage, store at -20°C in small aliquots to prevent freeze-thaw cycles.
Stability:	Shelf life: one year from despatch.
Predicted Protein Size:	69kDa
Gene Name:	SH3 domain GRB2 like endophilin interacting protein 1
Database Link:	Entrez Gene 84251 Human Q9BQI5-5
Background:	SGIP1 functions as an endocytic protein that affects signaling by receptors in neuronal systems involved in energy homeostasis via its interaction with endophilins
Synonyms:	DKFZp686A16142; DKFZp761D221; FLJ33378; FLJ43054



[View online »](#)

Product images:



Host: Rabbit
Target Name: SGIP1
Sample Tissue: HepG2 Cell Lysate
Antibody Dilution: 1.0 μ g/ml

Host: Rabbit
Target Name: SGIP1
Sample Type: HepG2 Whole Cell lysates
Antibody Dilution: 1.0ug/ml