

## Product datasheet for **TA358932**

### PLEKHA2 Rabbit Polyclonal Antibody

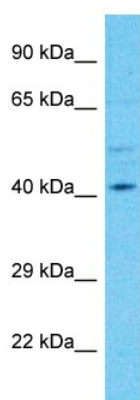
#### Product data:

Product Type:	Primary Antibodies
Applications:	WB
Reactivity:	Human
Host:	Rabbit
Clonality:	Polyclonal
Immunogen:	The immunogen is a synthetic peptide directed towards the C-terminal region of Human PLEKHA2
Specificity:	<b>Expected reactivity:</b> Human
Formulation:	Liquid. Purified antibody supplied in 1x PBS buffer with 0.09% (w/v) sodium azide and 2% sucrose.
Concentration:	lot specific
Purification:	Affinity Purified
Conjugation:	Unconjugated
Storage:	For short term use, store at 2-8°C up to 1 week. For long term storage, store at -20°C in small aliquots to prevent freeze-thaw cycles.
Stability:	Shelf life: one year from despatch.
Predicted Protein Size:	46kDa
Gene Name:	pleckstrin homology domain containing A2
Database Link:	<a href="#">NP_067636</a> <a href="#">Entrez Gene 59339 Human</a> <a href="#">Q9HB19</a>
Background:	PLEKHA2 binds specifically to phosphatidylinositol 3,4- diphosphate (PtdIns3,4P2), but not to other phosphoinositides. It may recruit other proteins to the plasma membrane.
Synonyms:	FLJ25921; TAPP-2; TAPP2



[View online »](#)

Product images:



Host: Rabbit  
Target Name: PLEKHA2  
Sample Tissue: HeLa Cell Lysate  
Antibody Dilution: 1.0µg/ml

Host: Rabbit  
Target Name: PLEKHA2  
Sample Type: HeLa Whole Cell lysates  
Antibody Dilution: 1.0ug/ml