

## Product datasheet for **TA358928**

### PXMP4 Rabbit Polyclonal Antibody

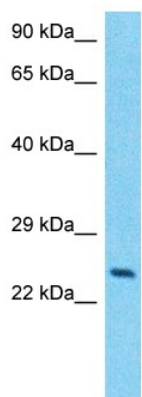
#### Product data:

Product Type:	Primary Antibodies
Applications:	WB
Reactivity:	Human
Host:	Rabbit
Clonality:	Polyclonal
Immunogen:	The immunogen is a synthetic peptide directed towards the C-terminal region of Human PXMP4
Specificity:	<b>Expected reactivity:</b> Dog, Guinea Pig, Horse, Human, Mouse, Rabbit, Rat <b>Homology:</b> Dog: 85%; Guinea Pig: 92%; Horse: 100%; Human: 100%; Mouse: 75%; Rabbit: 92%; Rat: 83%
Formulation:	Liquid. Purified antibody supplied in 1x PBS buffer with 0.09% (w/v) sodium azide and 2% sucrose.
Concentration:	lot specific
Purification:	Affinity purified
Conjugation:	Unconjugated
Storage:	For short term use, store at 2-8°C up to 1 week. For long term storage, store at -20°C in small aliquots to prevent freeze-thaw cycles.
Stability:	Shelf life: one year from despatch.
Predicted Protein Size:	23kDa
Gene Name:	peroxisomal membrane protein 4
Database Link:	<a href="#">Entrez Gene 11264 Human Q9Y6I8</a>
Background:	The function of this protein remains unknown.
Synonyms:	PMP24



[View online »](#)

## Product images:



Host: Rabbit  
Target Name: PXMP4  
Sample Tissue: COLO205 Cell Lysate  
Antibody Dilution: 1.0 $\mu$ g/ml

Host: Rabbit  
Target Name: PXMP4  
Sample Type: COLO205 Whole Cell lysates  
Antibody Dilution: 1.0ug/ml