

Product datasheet for **TA358927**

LRRTM3 Rabbit Polyclonal Antibody

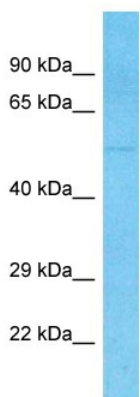
Product data:

Product Type:	Primary Antibodies
Applications:	WB
Reactivity:	Human
Host:	Rabbit
Clonality:	Polyclonal
Immunogen:	The immunogen is a synthetic peptide directed towards the middle region of Human LRRTM3
Specificity:	Expected reactivity: Human
Formulation:	Liquid. Purified antibody supplied in 1x PBS buffer with 0.09% (w/v) sodium azide and 2% sucrose.
Concentration:	lot specific
Purification:	Affinity Purified
Conjugation:	Unconjugated
Storage:	For short term use, store at 2-8°C up to 1 week. For long term storage, store at -20°C in small aliquots to prevent freeze-thaw cycles.
Stability:	Shelf life: one year from despatch.
Predicted Protein Size:	56kDa
Gene Name:	leucine rich repeat transmembrane neuronal 3
Database Link:	Entrez Gene 347731 Human Q86VH5-2
Background:	LRRTM3 exhibits a limited synaptogenic activity in vitro, restricted to excitatory presynaptic differentiation. It may play a role in the development and maintenance of the vertebrate nervous system.
Synonyms:	MGC131810; OTTHUMP00000019683



[View online »](#)

Product images:



Host: Rabbit
Target Name: LRRTM3
Sample Tissue: HT1080 Cell Lysate
Antibody Dilution: 1.0µg/ml

Host: Rabbit
Target Name: LRRTM3
Sample Type: HT1080 Whole Cell lysates
Antibody Dilution: 1.0ug/ml