

## Product datasheet for TA358922

### Enpep Rabbit Polyclonal Antibody

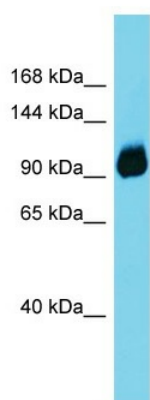
#### Product data:

Product Type:	Primary Antibodies
Applications:	WB
Reactivity:	Mouse
Host:	Rabbit
Clonality:	Polyclonal
Immunogen:	The immunogen is a synthetic peptide directed towards the C-terminal region of Mouse Enpep
Specificity:	<b>Expected reactivity:</b> Cow, Dog, Guinea Pig, Horse, Human, Mouse, Pig, Rabbit, Rat <b>Homology:</b> Cow: 86%; Dog: 93%; Guinea Pig: 79%; Horse: 86%; Human: 100%; Mouse: 86%; Pig: 93%; Rabbit: 79%; Rat: 93%
Formulation:	Liquid. Purified antibody supplied in 1x PBS buffer with 0.09% (w/v) sodium azide and 2% sucrose. <i>Note that this product is shipped as lyophilized powder to China customers.</i>
Concentration:	lot specific
Purification:	Affinity Purified
Conjugation:	Unconjugated
Storage:	For short term use, store at 2-8°C up to 1 week. For long term storage, store at -20°C in small aliquots to prevent freeze-thaw cycles.
Stability:	Shelf life: one year from despatch.
Predicted Protein Size:	108kDa
Gene Name:	glutamyl aminopeptidase
Database Link:	<a href="#">NP_031960</a> <a href="#">Entrez Gene 13809 Mouse P16406</a>
Background:	Enpep appears to have a role in the catabolic pathway of the renin-angiotensin system. It probably plays a role in regulating growth and differentiation of early B-lineage cells.
Synonyms:	AP-A; APA; CD249; EAP; gp160



[View online »](#)

Product images:



Host: Rabbit  
Target Name: Enpep  
Sample Type: Mouse Pancreas lysates  
Antibody Dilution: 1.0ug/ml