

## Product datasheet for **TA358920**

### **CED6 (GULP1) Rabbit Polyclonal Antibody**

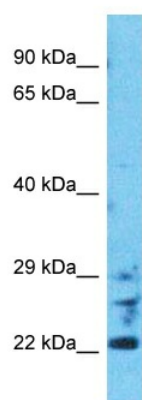
#### **Product data:**

|                         |  |
|-------------------------|--|
| Product Type:           | Primary Antibodies   |
| Applications:           | WB   |
| Reactivity:             | Human  |
| Host:                   | Rabbit   |
| Clonality:              | Polyclonal   |
| Immunogen:              | The immunogen is a synthetic peptide directed towards the middle region of Human GULP1   |
| Specificity:            | <b>Expected reactivity:</b> Human  |
| Formulation:            | Liquid. Purified antibody supplied in 1x PBS buffer with 0.09% (w/v) sodium azide and 2% sucrose.<br><i>Note that this product is shipped as lyophilized powder to China customers.</i>  |
| Concentration:          | lot specific   |
| Purification:           | Affinity Purified  |
| Conjugation:            | Unconjugated   |
| Storage:                | For short term use, store at 2-8°C up to 1 week. For long term storage, store at -20°C in small aliquots to prevent freeze-thaw cycles.  |
| Stability:              | Shelf life: one year from despatch.  |
| Predicted Protein Size: | 22kDa  |
| Gene Name:              | GULP, engulfment adaptor PTB domain containing 1   |
| Database Link:          | <a href="#">Entrez Gene 51454 Human Q9UBP9-3</a>   |
| Background:             | The protein encoded by this gene is an adapter protein necessary for the engulfment of apoptotic cells by phagocytes. Several transcript variants, some protein coding and some thought not to be protein coding, have been found for this gene. |
| Synonyms:               | CED-6; CED6; FLJ31156; GULP; OTTHUMP00000205908; OTTHUMP00000205909; OTTHUMP00000205911  |



[View online »](#)

## Product images:



Host: Rabbit  
Target Name: GULP1  
Sample Tissue: HepG2 Cell Lysate  
Antibody Dilution: 1.0 $\mu$ g/ml

Host: Rabbit  
Target Name: GULP1  
Sample Type: HepG2 Whole Cell lysates  
Antibody Dilution: 1.0ug/ml